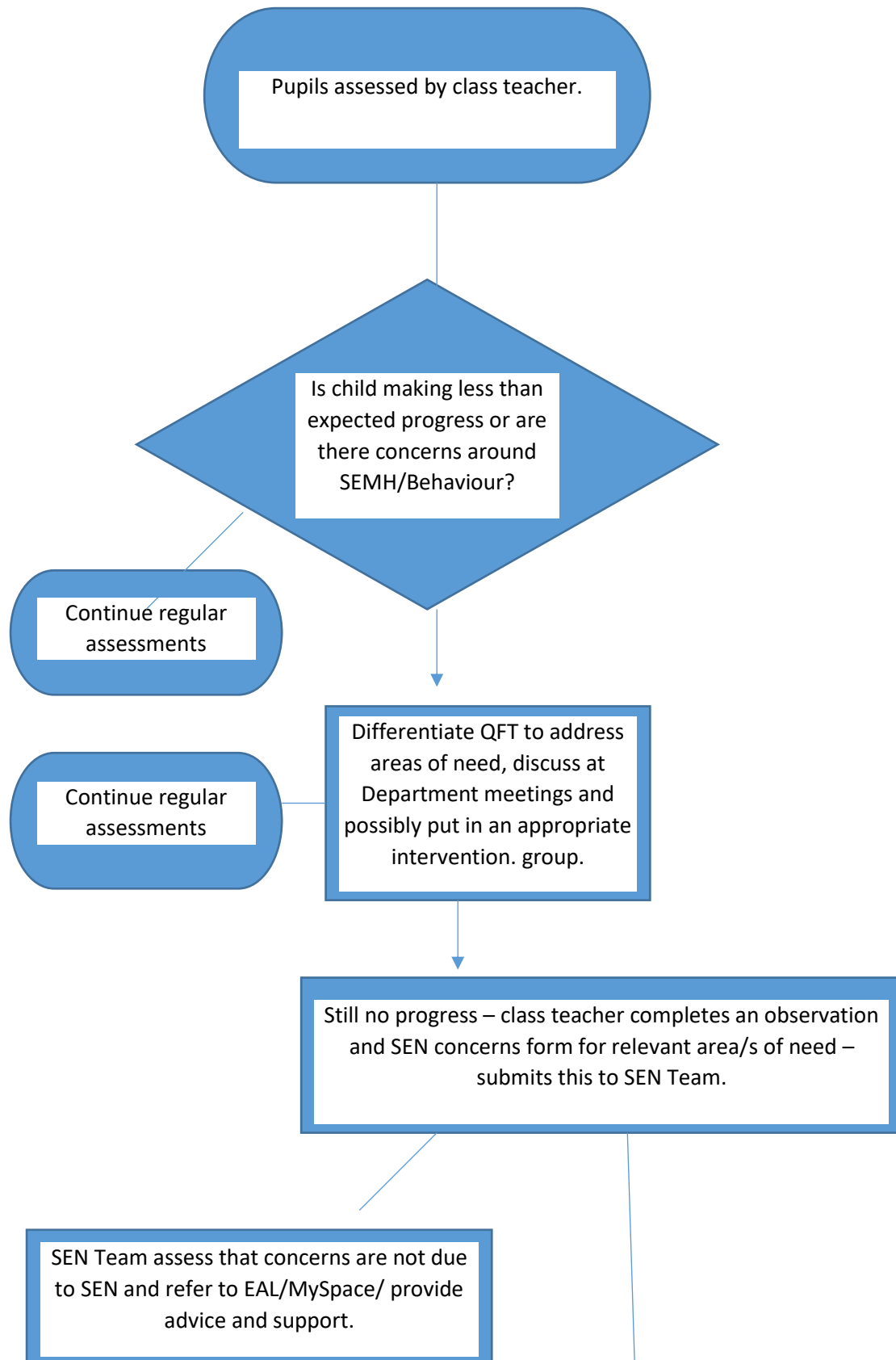


SEN PROCESS GALLIARD PRIMARY SCHOOL



The SEN Team support the Class Teacher with the Assess, Plan, Do, Review process.

- Advice to relevant staff on QFT for SEN that could be used.
- Advice on relevant class or withdrawal interventions.
- Observation of the pupil.
- Further assessment to gain a better understanding of the pupils needs.

Meet with parents to get a clearer picture of the whole child.

If SEN Team assess that the child may have SEN, complete page 2 of the concern sheet with the parents and pupil will be placed on SEN register and monitored.

- With parental consent, child can be referred to relevant outside agencies.

Child makes progress and achievement gap closes.

Continue with support as needed. Discuss at progress meetings. Remove from register if applicable.

Pupil continues to struggle; interventions make little difference, remains on register.

Termly assessment between SEN Team/Class Teacher and Parents if referral to outside agencies is required.

Termly LSPs completed with SMART targets following assess, plan, do, review discussed with child, class teacher and parents. SEN Support.

Discuss with SENCO and HT if EHCP request is appropriate.