



Be the best that you can be

*Galliard Primary
School*

*Year 2 Newsletter
Summer Term*

www.galliardprimaryschool.co.uk
020 8804 1818

Welcome back!

Dear Parents and Carers,

Welcome to the summer term! We hope you and your families enjoyed a restful and enjoyable break.

Summer is always a busy and exciting time in school, filled with opportunities for pupils to build on their learning and celebrate their progress. We are looking forward to a successful and rewarding term ahead.

We kindly ask that you continue to prioritise listening to your child read regularly at home. Reading is the foundation for all learning and plays a vital role across every area of the curriculum. Your continued support makes a significant difference to your child's progress and confidence.

Thank you, as always, for your ongoing support. We greatly value our partnership with you and look forward to working together throughout the term.

With warm wishes,

Miss M Begum

Assistant Headteacher
Year 1, 2 and 3 Head of Department



Meet the team

Assistant Headteacher

Miss Begum

Year 2

2A Miss Akinci

2Mc Ms McInerney

2M Miss Monani

Miss Abdi

HLTA's

Mrs Chang

Mrs Altinok

Rainbow Class

Mrs Prendagarst

Mrs Panayi



Attendance



Gates open at 8:45am, with registration promptly at 8:55am. We expect attendance to be at least 96% this term. Maintaining strong attendance is vital missing even small amounts of time can quickly lead to gaps in learning and reduced confidence.

Punctuality is just as important. Arriving a few minutes late each day soon adds up, and the start of the morning is a crucial time for settling in and reinforcing key skills that underpin the day's learning.

Any requests for absence must be submitted in advance via the school office. Each request will be considered individually, and supporting evidence will be required.

Year 2 Curriculum

Reading: Reading Programme: Vocabulary, Fluency & Comprehension based on a weekly core text

English: Postcards, narratives, diary entries, transitional poems and instruction texts based on our core texts: Meerkat Mail by Emily Gravett, The Bog Baby by Jeanne Willis and The Disgusting Sandwich by Gareth Edwards

Maths: Fractions, Statistics, Mass, Capacity, Length, Temperature, Position, Direction, Addition, Subtraction, Multiplication, Division, Place Value

Science: Plants, Living Things & Their Habitats

History: The Great Fire of London (Cause & Consequence)

Geography: Settlements of the UK

Art: Inspired by George Seurat

D&T: Making a pizza

R.E: What does it mean to belong to a faith community and how should we care for others/the world? Why does it matter?

Music: Exploring instruments and their symbols, timbre, tempo and dynamics

PSHE: Living in the Wider World

Computing: Commands, algorithms, programming

P.E.: Games, Gymnastics & Dance

Talk Time: A weekly activity that encourages the children to discuss, explain, agree, disagree and question topical issues

TRIPS: Capel Manor

Homework

- Weekly Maths homework will be uploaded on **MyMaths**
- **Reading:** Children will be provided with two scheme RWI books and one Reading Journey book weekly to read at home daily. It is important that children bring their scheme reading book to school **every day!**



Read, Read, Read



Start of Reception

End of Year 1 Spring 1
Year 1 Year 2

At Galliard, we believe that reading is the key to unlocking a world of imagination, knowledge, and confidence. Through stories, children can travel to new places, meet exciting characters, and learn new ideas. In Key Stage 1, we aim to nurture a love of reading by sharing books together every day, encouraging curiosity, and celebrating each child's progress. We know that strong reading skills not only support learning across all subjects but also help children to develop creativity and a lifelong enjoyment of books.

To give our pupils the very best start, we have committed to a strong phonics programme: **Read Write Inc (RWI)**. This structured approach helps children build the skills they need to decode words, grow their vocabulary, and become fluent, confident readers.

We expect most children to reach RWI Blue level by the end of Year 1 and RWI Grey level by the end of the first half of the spring term in Year 2, at which point they graduate from the RWI programme. In order to progress onto RWI Grey, we expect children to read fluently - this means reading with accuracy, appropriate pace, and expression.

By the end of Spring term, we expect children to move on to our **Banded Book scheme by Badger** (see the levelled grid on the next page). As children develop their fluency and comprehension, they will progress through the Badger book bands. **Children are expected to be reading at Badger Book Band White by the end of the Summer Term.** We understand that parents and carers have busy lives, but we strongly encourage you to read with your child every day. Just ten minutes of sharing a book together can make a real difference to their confidence, progress, and enjoyment of reading.

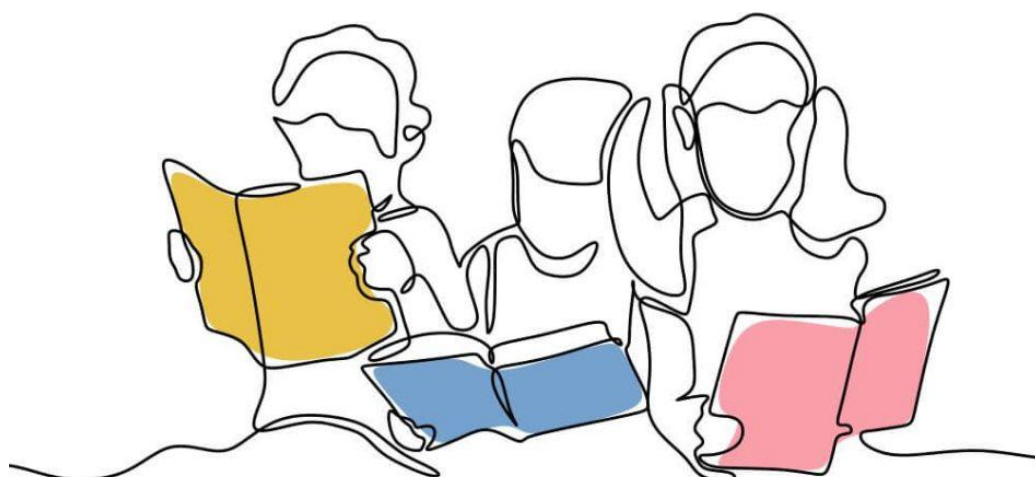


Read, Read, Read



Book Band	Emerging	Expected	Confident Exceeding	Super Confident Exceeding
Lilac (Level 0)	Reception			
Pink (Level 1)		Reception		
Red (Level 2)	Year 1	Reception		
Yellow (Level 3)	Year 1	Reception		
Blue (Level 4)		Year 1	Reception	
Green (Level 5)	Year 2	Year 1	Reception	
Orange (Level 6)	Year 2	Year 1		
Turquoise (Level 7)		Year 2	Year 1	
Purple (Level 8)		Year 2	Year 1	
Gold (Level 9)		Year 2	Year 1	
White (Level 10)	Year 3	Year 2	Year 2	
Lime (Level 11)	Year 3, Year 4		Year 2	
Brown (Level 12)	Year 4, Year 5	Year 3	Year 2	
Grey (Level 13)	Year 5, Year 6	Year 4	Year 3	Year 2
Dark Blue (Level 14)	Year 6	Year 5	Year 4	Year 3
Dark Red (Level 15)		Year 6	Year 5	Year 4
Black (Level 16)			Year 6	Year 5
Black Plus (Level 17)				Year 6

By the end of the Summer Term, children in Year 2 are expected to be reading at Badger Book Band White level.



Read, Read, Read



Please ensure your child comes to school in their full PE kit on P.E. days. The school PE kit includes:

- Navy shorts, joggers, or leggings
- House t-shirt (Bedford Blue, Richmond Red, Grosvenor Green, or York Yellow)
- Comfortable trainers

For safety and ease, please make sure your child can put on and take off their trainers independently, and can fasten them securely. While we advise that children do not wear earrings to school on PE days, if they do, we recommend studs. These can be securely taped during PE lessons to avoid injury.

<i>Class</i>	<i>Days</i>
2A	Tuesday, Wednesday
2MC	Tuesday, Thursday
2M	Tuesday, Thursday



Dates for your diary (so far)

May

4th Bank Holiday. School closed

W/b 4th Year 2 End of Year Assessments

7th Polling Day. School closed to children

22nd Last day of this half term School ends at 15:20 (15th – 29th half term)

June

1st Staff INSET day. School closed to children

2nd Children return to school

3rd 2MC Trip to Capel Manor Gardens

4th 2M Trip to Capel Manor Gardens

5th 2A Trip to Capel Manor Gardens

23rd Year 1 and 2 Summer Disco 15:45 – 16:45

27th Galliard's Summer Fete! 13:00 – 16:00

July

17th Last day of the school year! School ends at 14:00

